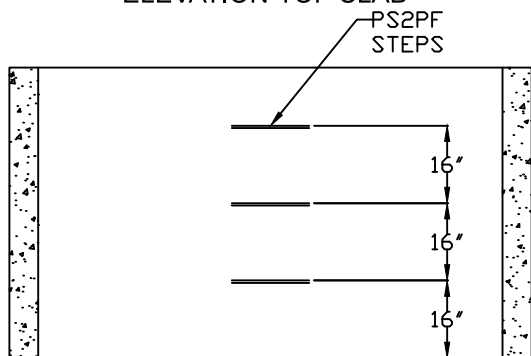
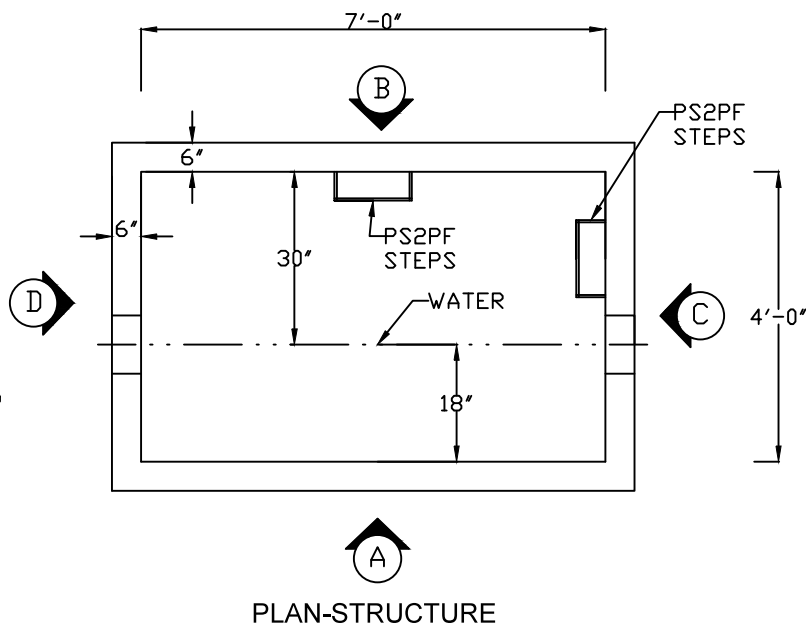
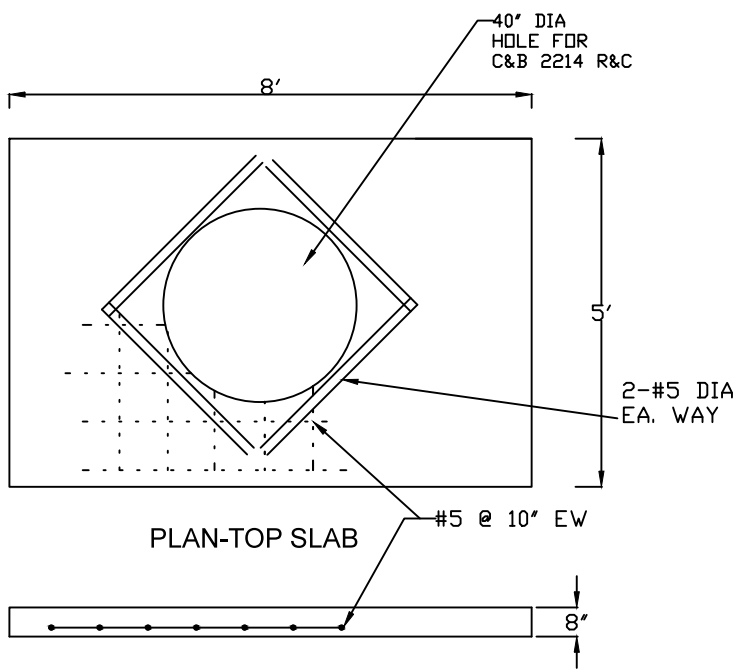


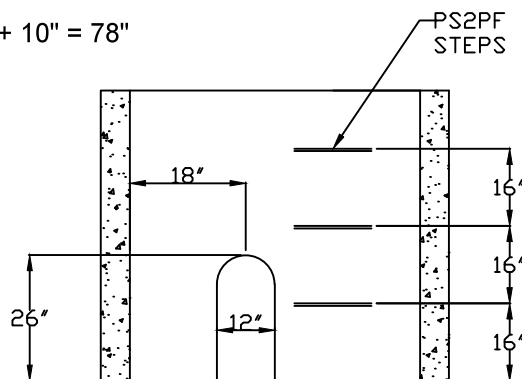
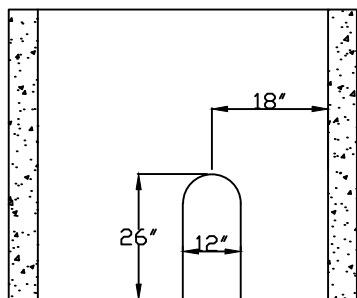
3" BACKFLOW VAULT - KCMO



ELEVATION

ELEVATION

WT. TOP SLAB 3886#  
 WT. STRUCTURE 8700#  
 TOTAL HEIGHT 60" + 8" + 10" = 78"



ELEVATION

ELEVATION

REBAR PLACEMENT  
 #5 @ 10" C/C EA. WAY WALLS  
 #5 @ 10" C/C EA. WAY TOP SLAB