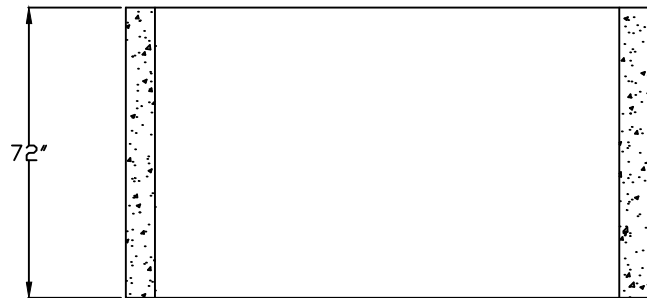
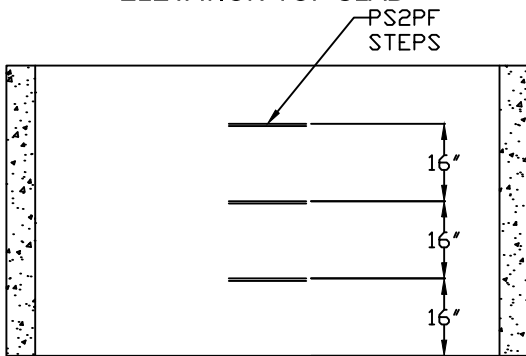
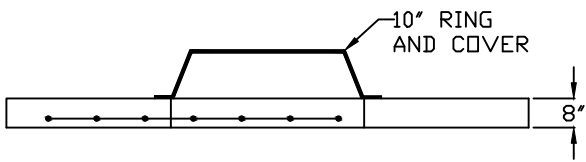
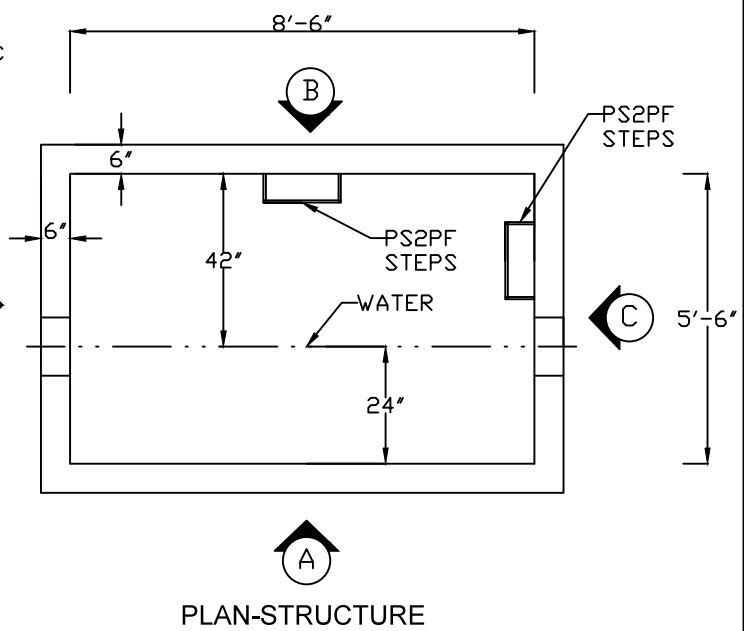
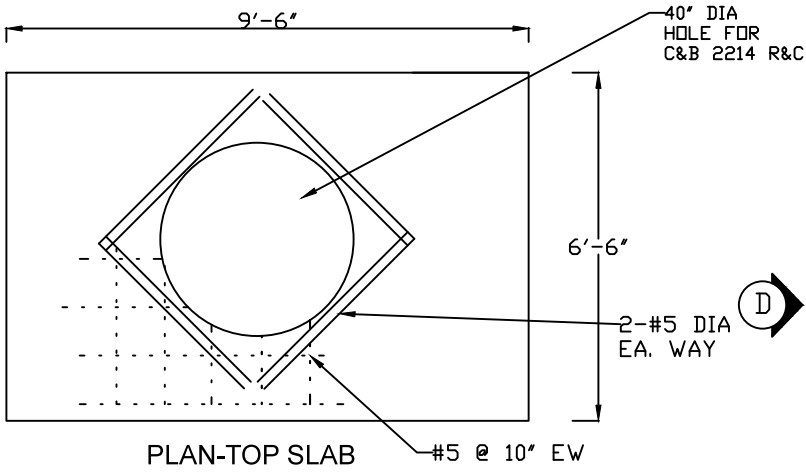


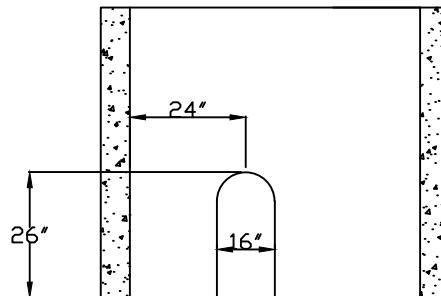
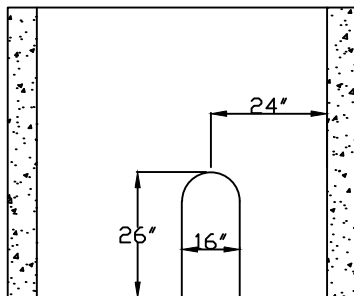
10" BACKFLOW VAULT - KCMO



ELEVATION B

ELEVATION A

WT. TOP SLAB 5537#
 WT. STRUCTURE 13050#
 TOTAL HEIGHT 72" + 8" + 10" = 90"



ELEVATION D

ELEVATION C

REBAR PLACEMENT
 #5 @ 10" C/C EA. WAY WALLS
 #5 @ 10" C/C EA. WAY TOP SLAB