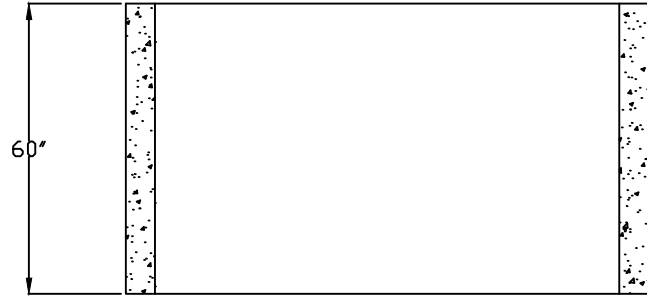
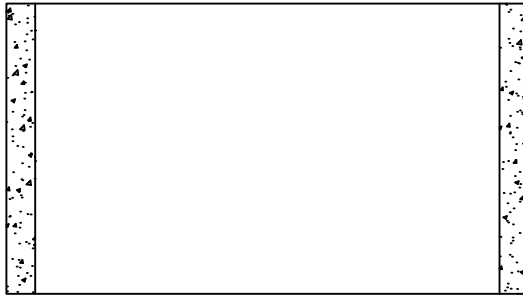
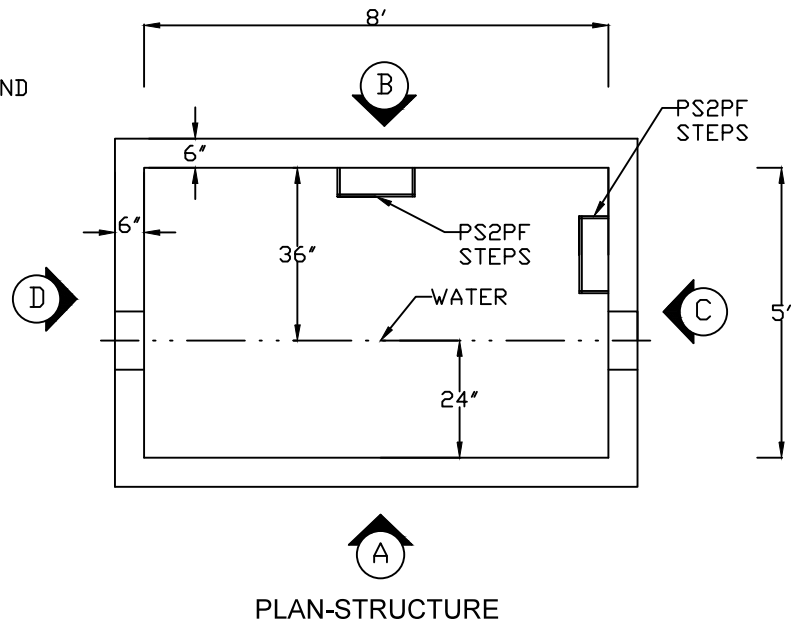
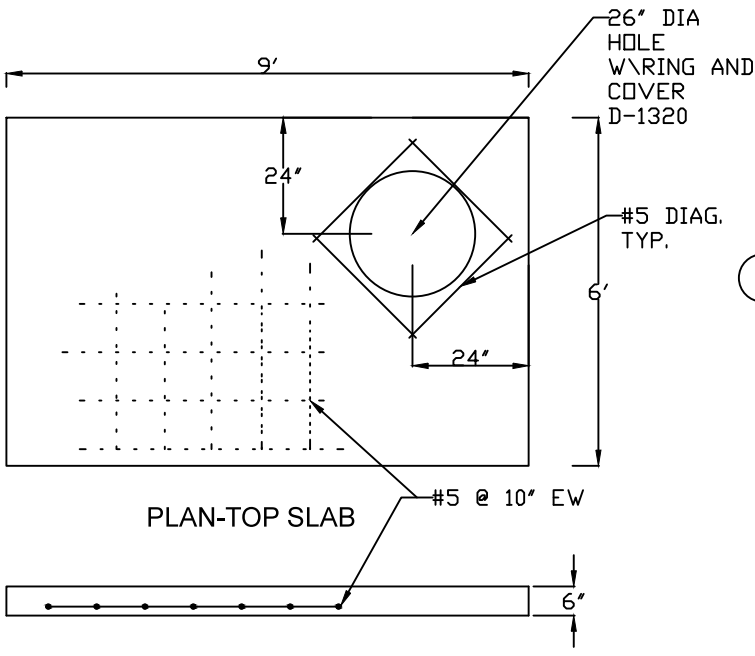


JO. CO.

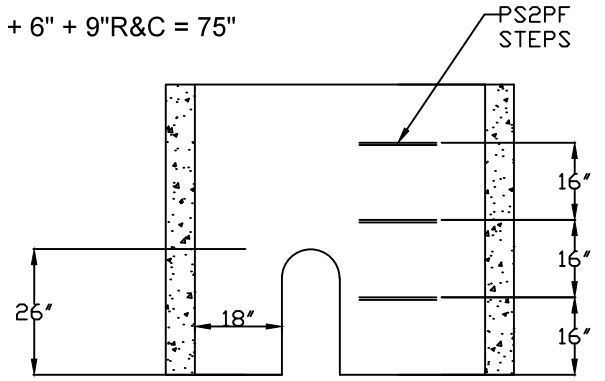
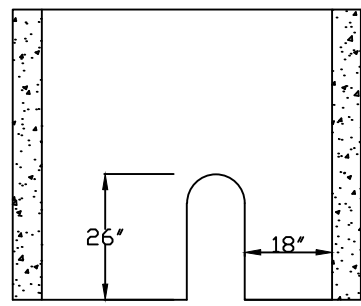
6" BACKFLOW



ELEVATION B

ELEVATION A

WT. TOP SLAB 3915#
 WT. STRUCTURE 10150#
 TOTAL HEIGHT 60" + 6" + 9"R&C = 75"



ELEVATION D

ELEVATION C

REBAR PLACEMENT
 #5 @ 10" C/C EA. WAY WALLS
 #5 @ 10" C/C EA. WAY TOP SLAB